

Advanced CNC Metal Flow Forming Machines

With its new 2-roller flow forming machines, MJC has developed the future within flow forming technology. This new concept has revolutionized the metal forming industry. MJC Flow Forming Machines are specially designed for the manufacturing of rotary and shear formed precision components. The cylindrical flow forming process allows great potential for weight optimization, reduction of production steps, and control of tight tolerance wall thicknesses. MJC customers benefit from the best service and support in the industry through locally authorized service centers.



DESIGN FEATURES

- 2-Roller Design
- Superior Feed Rate
- Better Balance in Forming Forces
- Faster Cycle Times
- Rugged Construction
- Oversized Linear Slide Bearings
- Servo Ball-screw Drives
- Rigid X Slide Units
- Trouble-free Operation
- Quick Tooling Changeovers
- Simple Diagnostics
- Low Maintenance
- Siemens Sinumerik Control System
- Custom programming software

“SetupPRO”[®] Machine Monitoring Software

• Revolutionary software solutions from MJC that ease the use and setup of modern CNC flow forming machines.

• Roller Positioning and Offset Control

• Individually and Programmable Axial Roller Force Control

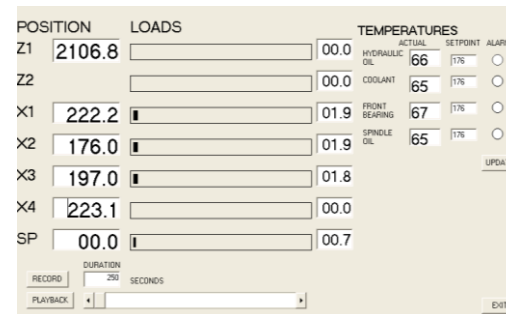
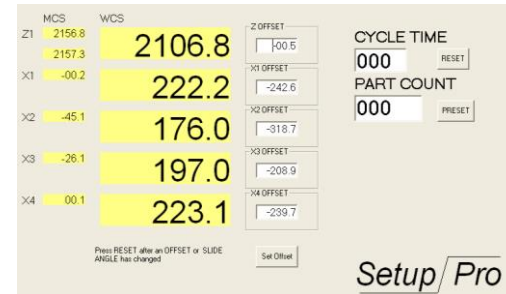
• Longitudinal Axis Force Feedback

• Main Spindle Motor Load Feedback

• Actual Cycle Time Timer for Production Cycle Optimization

• Production Part Counter for counting up or down

• Programmable Machine System Temperature Monitoring



**ENGINEERING AND
TECHNOLOGY, INC.**

Advanced CNC Equipment for Metal Forming Technology CNC Flow Forming Machines SP-850.4



Machine Specifications

Blank/Work piece dimensions

SP-850-4

Min/max work piece Diameter:

10 mm / 150 mm

Cylindrical length in forward flow forming:

max. 300 mm

Cylindrical length in reverse flow forming:

max. 500 mm

Machine Data

Tool mounting main spindle as per DIN 55022:

size 6

Power main spindle drive:

20 kW AC Vector

Main spindle speed:

max. 6000 rpm

Transverse slide unit force:

max. 10 kN

Transverse slide unit stroke:

150 mm

Longitudinal slide stroke:

400 mm

Longitudinal slide force:

max. 10kN

Number of radial feed units in the slide:

2 units

Tailstock stroke:

400 mm

Tailstock clamping force:

max. 10 kN

PLC Control:

Siemens Step 7

CNC control:

Siemens 840Dsl

Specifications Subject to Change Without Notice

**ENGINEERED
PERFECTION**

